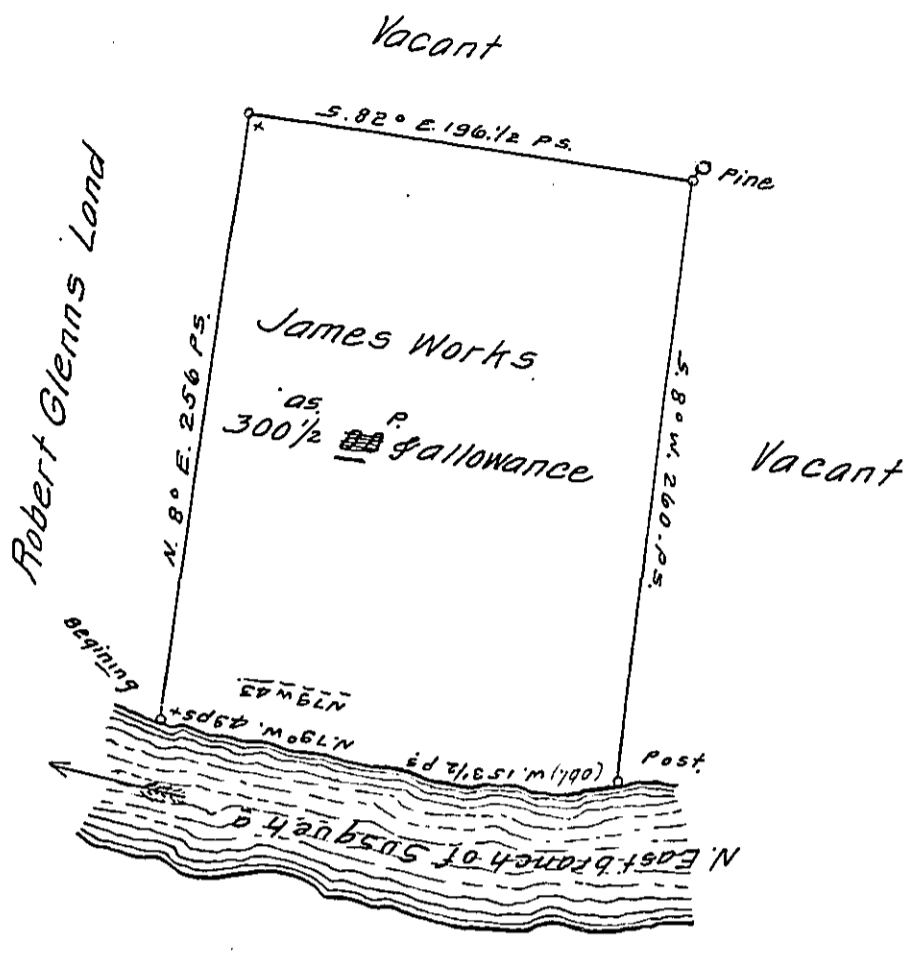


15
43
961



A Draught of a Tract of Land called Hemp Feilds. Situate on the West-
 erly Side of the north East branch of Susquehanna river, adjoining
 and above a Tract of Land Surveyed for Robert Glenn and between
 Briar Creek and Nescopeck Falls in Northampton County. containing
 three hundred Acres and Eighty eight Perches besides the usu-
 al allowance of 6 Cent for Roads &c. Surveyed 10th August 1769 for
 James Works in Pursuance of an order dated the third day of Ap-
 ril 1769. Number 1952.

To by Cha^s Stewart. Dep. Sur^r.
 John Lukens Esq^r.
 Survey^r General.

IN TESTIMONY that the above is a copy of the original remaining on file in
 the Department of Internal Affairs of Pennsylvania, made
 conformably to an Act of Assembly approved the 16th day of
 February, 1833, I have hereunto set my Hand and caused
 the Seal of said Department to be affixed at Harrisburg,
 this eighteenth day of December 1911.

Nancy Houch
 Secretary of Internal Affairs.